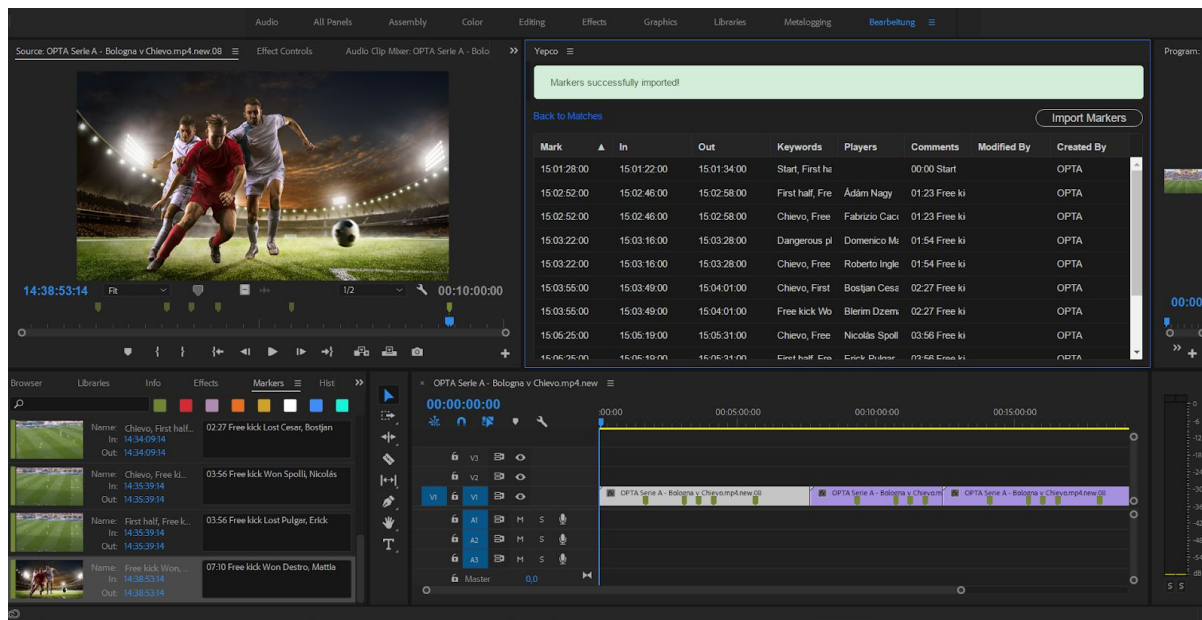


PRESS RELEASE

Munich, Germany - April 5 2018

YEPKO Announces Sports Data Feed Connector for Adobe Premiere Pro CC

DATE, LOCATION OF ANNOUNCEMENT - YEPKO is delighted to announce that it is now providing a sports data feed connector for Adobe® Premiere® Pro CC, part of the Adobe Creative Cloud®. YEPKO offers great advantages for organizations using Adobe Premiere Pro to edit and produce their sports content.



One of the biggest problems facing production teams is the time and expense required to manually log their licensed sports data. YEPKO's connector can dramatically increase data turnaround times, while also reducing the labor hours required in the logging and production process.

For example, logging a Premier League game can take 120 minutes, however, with YEPKO's sports data feed connector all content is logged automatically as event markers. This allows content creators to easily search for the most important events and build highlights packages quickly and easily.

YEPKO's automated marker creation feature ensures consistency for facilities using both Adobe Premiere Pro CC and Avid MediaCentral, making it much simpler to identify and import the game data they need. The metadata added by YEPKO can be easily searched using the Premiere Pro search box.

The biggest impact that YEPKO's sports data connector will have is on a customer's bottom line. With their licensed data being auto-logged, they will be able to get much more value out of licensed sports data, while simultaneously cutting the effort needed, increasing their return on investment.

For more information visit <https://yepco.com/>

Contact
YEPKO GmbH
Marcel Cherubin
49-(0)173-308-2188
marcel.cherubin@yepco.com